



Introduction

Hello! Welcome to the National Aluminum Production Heritage Association, **NAPHA** for short. Our mission is the preservation of artifacts and history related to production and products of the early aluminum industry for interpretive display at various local, regional and national events, with the aim of enlightening and inspiring our audience to understand and appreciate hard work, ingenuity, and the heritage of aluminum. Created in January 2019, we are a not-for-profit and educational 501c3 tax exempt organization made up of people with a passion for preserving the stories and artifacts related to this industry. We have national aspirations with our epicenter in Massena and Pittsburgh. We are made up of Partners, Sponsors, and Members. Partners are other organizations that help us with our mission. Sponsors provide the needed funding for our efforts. And Members are people like YOU who are reading this newsletter. Please become a Member by completing and mailing the form at the end of this newsletter. Membership is free, but donations are always welcome. The shutdown of plants in Massena may still be painful to some that worked there and was disruptive to the families that live here. During and after the shutdown of the steel industry in Pittsburgh, community leaders there decided that preserving their regions identity was important not only for the families impacted, but to elevate expectations for the future, which while different, should not be less important than what occurred in the past. It's our hope that NAPHA can contribute the same for our region. Your comments and suggestions are welcome!

The Massena Smelting Pot

If you've ever visited Pittsburgh and taken a ride on one of the majestic Clipper Fleet tour boats near Station Square, you might have seen the

aluminum smelting pot display near the ticket office. That aluminum production artifact is a restored P-75 smelting pot **from Massena NY**. The Pittsburgh Landmarks Foundation acquired and displayed the artifact as part of its Riverside Industrial History Walkway. The current owners of Station Square are no longer interested in this display and are willing to donate it. If no one takes it, it will be scrapped. **NAPHA is leading the charge to relocate it**, first back to Massena or at least to another safe place in Pittsburgh. We have developed Partnerships with Rivers of Steel and Pittsburgh Landmarks Foundation and applied for a grant to the Hunt Foundation to get this done. More to come on this very important project.



Massena Smelting Pot on display in Pittsburgh PA. NAPHA is working to move/acquire this item.

The Savoca Collection

You may have heard of our predecessor the *Massena Aluminum Historical Association*, led by Santo Savoca. The collection of artifacts from Alcoa, Reynolds and GM were housed in the Massena Museum and displayed there and at other regional events. After his untimely passing, the collection was preserved by his son Joseph. Joseph contacted NAPHA and donated the remaining items he had to us. He had already donated other items to the New York State Museum, and St. Lawrence County



Historical Society to ensure their preservation. We are grateful for Joseph's actions to preserve these items and are satisfied with their location. We will contact these other museums to see if NAPHA can help display and add context to these items for our communities' benefit. ***If you have any items or mementos from Alcoa, Reynolds or GM, please consider donating these to NAPHA for their preservation.***



The Savoca Collection. NAPHA has acquired these items

Arsenal of Democracy Collection

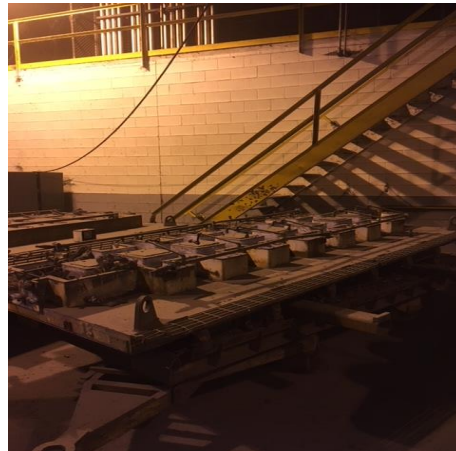
What better way to honor our veterans than to dedicate significant artifacts to them. Our work in the factories has and will continue to support our servicemen and women in foreign lands. Stand #14 from the 12" Mill was set aside in 2014 during decommissioning of that mill. It has been on display within Building 140 since. The 12" Mill was installed in 1942 to support the war effort. On Veterans Day this year we will dedicate this item to our veterans to recognize them and the important work we do in Massena to keep America safe and free.



Continuous 12" Mill, installed 1942, Stand 14 on display in Bldg. 140. To be dedicated to our Veterans this Veterans Day.

Massena & Direct Chill Casting

William T. Ennor of Alcoa's Massena Operations devised the idea of directly impinging water on the solidified shell of ingot as it was cast. Using this direct chill (DC) process, it was possible to drop the ingot continuously and avoid the turbulence, and slow cooling of smaller cast iron tilt molds. The higher quality ingot reduced surface cracking, allowed larger size ingots, and a greater variety of alloys to be cast. We could not have the larger size planes today without Ennor's invention! It was Massena plant engineers and machinists, who designed and built all the experimental molding equipment. To preserve and educate people on the importance of this development, NAPHA is working with Alcoa to attain several items from the Massena East Plant casthouse including obsolete casting tables, bottom blocks, cruces, molds, troughs, and degassers.



Casthouse Items from East Plant

Our Board

Kevin Kitzman – President
Steve Rombough – Vice President
Lynn Crump – Secretary, Treasurer
Mark Southwick – Historian
Randy Peets – Board Member
Lloyd Grandy – Board Member

Special thanks to our first Sponsor –



National Aluminum Production Heritage Assoc. Membership Form

Name _____

Address _____

Phone _____

Email _____

Comments _____

Donations:

Please make check to “National Aluminum Production Heritage Assoc.”

Mail to:

National Aluminum Production Heritage Assoc.
PO Box 277
Massena, NY 13662